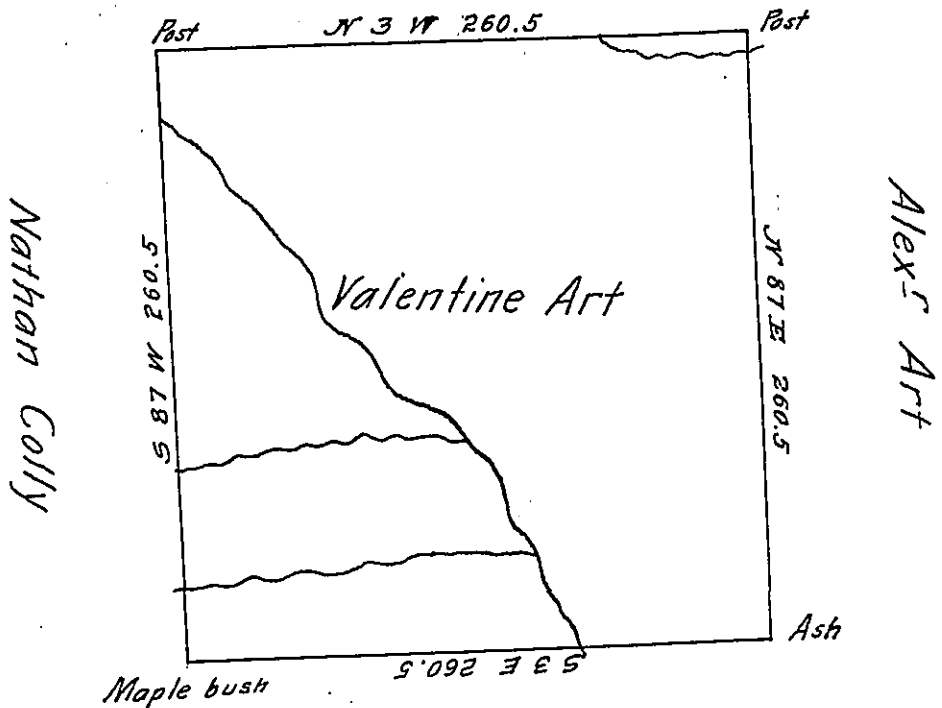


Simon Art



Samuel Art

Situate on the waters of Sandy Creek in district No. 3
 Allegany County, containing 400^{ac} 16^{po} & allowance, Surveyed
 9th November 1795 in pursuance of a Warrant granted to
 Valentine Art, April 21st 1794.

Ben Hokely D.S.

Dan^l. Brodhead, Esq. S.G.

in Sandy Lake Township, Mercer County

IN TESTIMONY that the above is a copy of the original remaining on file in
 the Department of Internal Affairs of Pennsylvania, made
 conformably to an Act of Assembly approved the 16th day of
 February, 1833, I have hereunto set my Hand and caused
 the Seal of said Department to be affixed at Harrisburg,
 this thirtieth day of July 1903.

James P. Brown
 Secretary of Internal Affairs.